



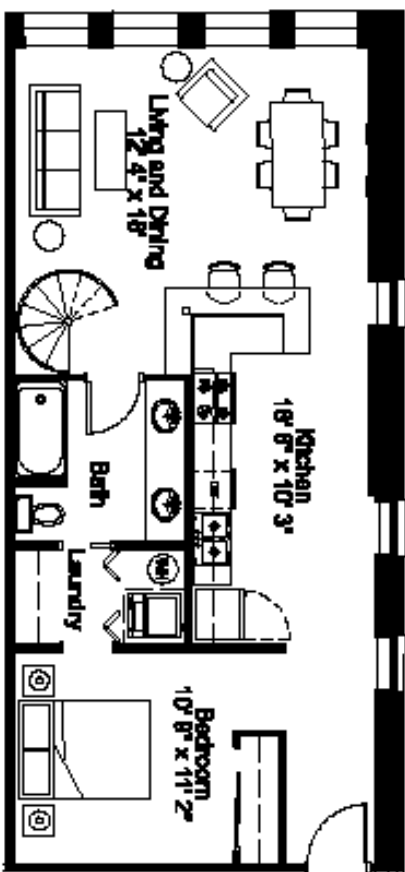
Photography by warnerphotography.com

**RICE-WHITE BUILDING
21 BILTMORE AVENUE
Unit 301
ASHEVILLE, NC**

Eight residential units are available in the historic Rice-White building in the heart of downtown Asheville. Jeff Dalton, architect, Heartwood Renovations and Public Interest Projects worked together to create units which combine careful restoration with thoughtful integration of new features. Hardwood floors, high ceilings, secured entry, and high-speed wiring are just a few of the amenities that make these unique units great places to call home. Walk to the theatre, the movies, the music club, the grocery store and many fine shops and restaurants – they're all in your neighborhood!

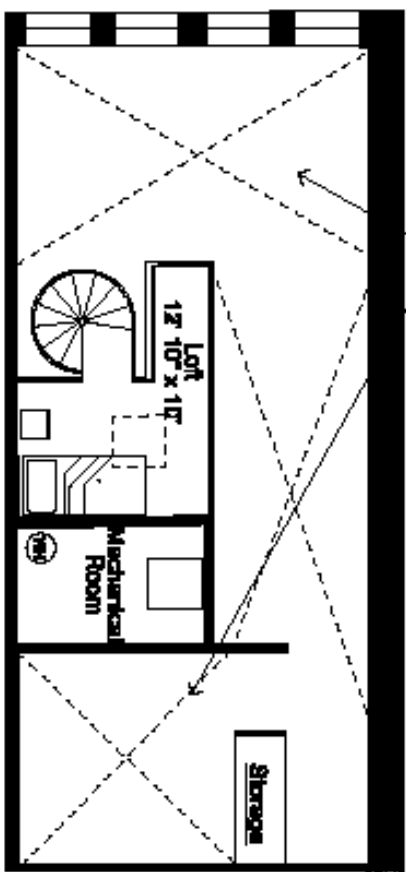
Unit 301 overlooks Biltmore Avenue. This one-bedroom, one-bath unit has a mezzanine which could be used for an office, studio or guest bedroom. At approximately 907 square feet, this unit is priced at \$334,655.

**For more information, please call:
Harry Weiss 255-7951 x203
Karen Ramshaw 255-7951 x202
Public Interest Projects, Inc.**



Open to Floor Below

Main Floor Plan



Loft Plan

301 1 Bedroom with a Loft

BILTMORE AVENUE



R CONDOMINIUMS
 1000 BILTMORE AVENUE, SUITE 100
 TOWSON, MD 21286
 (410) 528-1234

The Rice - White Condominium

1424 BILTMORE AVENUE, ARHISVILLE, NORTH CAROLINA
 PRELIMINARY PLANNING DRAWINGS FOR ILLUSTRATION PURPOSES
 FINAL PLANS AND FLOOR PLANS SUBJECT TO CHANGE