



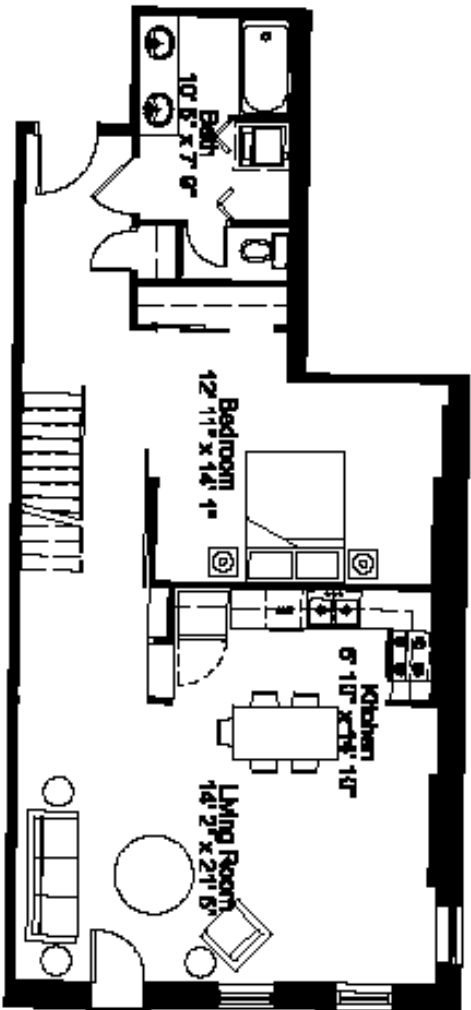
Photography by warnerphotography.com

**RICE-WHITE BUILDING  
21 BILTMORE AVENUE  
Unit 304  
ASHEVILLE, NC**

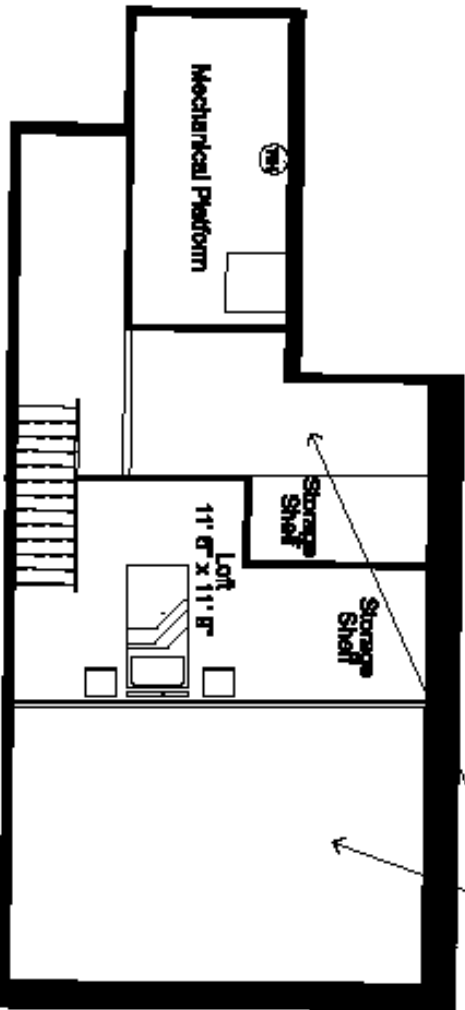
Eight residential units are available in the historic Rice-White building in the heart of downtown Asheville. Jeff Dalton, architect, Heartwood Renovations and Public Interest Projects worked together to create units which combine careful restoration with thoughtful integration of new features. Hardwood floors, high ceilings, secured entry, and high-speed wiring are just a few of the amenities that make these unique units great places to call home. Walk to the theatre, the movies, the music club, the grocery store and many fine shops and restaurants – they're all in your neighborhood!

Unit 304 has a wonderful kitchen/living room with views to the West. A sliding barn door opens into the interior bedroom that is perfect for sleeping. There is an open mezzanine overlooking the living room and plenty of storage. At approximately 1089 square feet, this unit is priced at \$381,055.

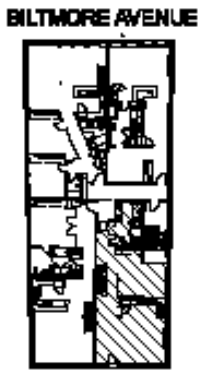
**For more information, please call:  
Harry Weiss 255-7951 x203  
Karen Ramshaw 255-7951 x202  
Public Interest Projects, Inc.**



Open to Floor Below



### 304 1 Bedroom with a Loft



BILTMORE AVENUE

**R** ONE NORTH BILTMORE AVENUE  
 SUITE 200  
 FARMINGDALE, NY 11735  
 708.281.2844  
 FARMINGDALE, NY

**The Rice - White Condominium**  
 1824 BILTMORE AVENUE, ABERDEEN, NORTH CAROLINA  
 PRELIMINARY PLANNING ONLY FOR ILLUSTRATIVE PURPOSES  
 FINAL PLANS AND FLOORPLANS SUBJECT TO CHANGE