



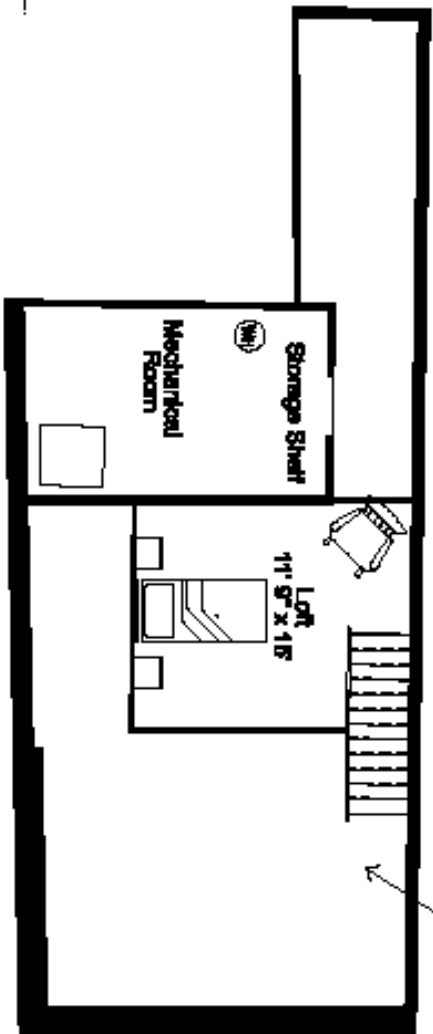
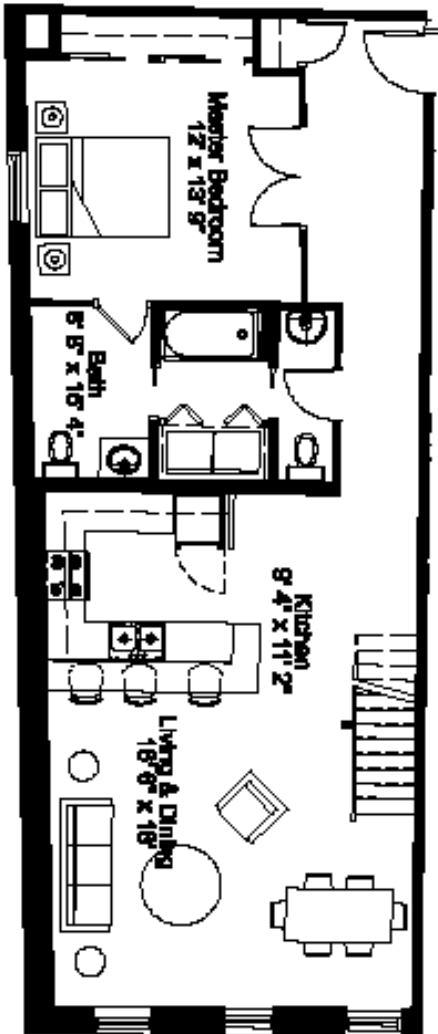
Photography by warnerphotography.com

**RICE-WHITE BUILDING
21 BILTMORE AVENUE
Unit 303
ASHEVILLE, NC**

Eight residential units are available in the historic Rice-White building in the heart of downtown Asheville. Jeff Dalton, architect, Heartwood Renovations and Public Interest Projects worked together to create units which combine careful restoration with thoughtful integration of new features. Hardwood floors, high ceilings, secured entry, and high-speed wiring are just a few of the amenities that make these unique units great places to call home. Walk to the theatre, the movies, the music club, the grocery store and many fine shops and restaurants – they're all in your neighborhood!

Unit 303 opens into a hall with a large skylight. The bedroom has an exposed brick wall and the additional half bath is great for guests. This loft unit has a large mezzanine with overlooking the living room that would make a spacious study or guest bedroom. At approximately 1130 square feet, this unit is priced at \$398,755.

**For more information, please call:
Harry Weiss 255-7951 x203
Karen Ramshaw 255-7951 x202
Public Interest Projects, Inc.**



303 1 Bedroom with a Loft



BILTMORE AVENUE

R
 ONE NORTH JACKSON
 SUITE 100
 TOWSON, MD 21286
 ARCHITECT, INC.

The Rice - White Condominium
 1424 BILTMORE AVENUE, ABINGDON, NORTH CAROLINA
 PRELIMINARY PLANNING FOR ALTERNATIVE PROJECTS
 FINAL PLANS AND FLOORPLANS SUBJECT TO CHANGE