



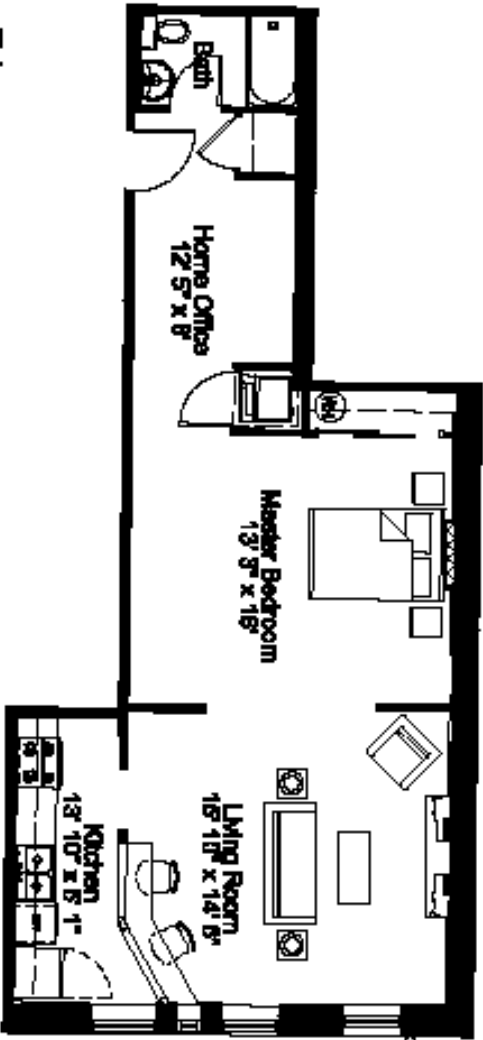
Photography by warnerphotography.com

**RICE-WHITE BUILDING
21 BILTMORE AVENUE
Unit 204
ASHEVILLE, NC**

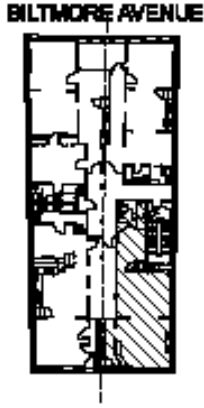
Eight residential units are available in the historic Rice-White building in the heart of downtown Asheville. Jeff Dalton, architect, Heartwood Renovations and Public Interest Projects worked together to create units which combine careful restoration with thoughtful integration of new features. Hardwood floors, high ceilings, secured entry, and high-speed wiring are just a few of the amenities that make these unique units great places to call home. Walk to the theatre, the movies, the music club, the grocery store and many fine shops and restaurants – they're all in your neighborhood!

Unit 204 is a room of one's own. This studio unit would be the perfect jewel-box unit or city getaway. Studio/one-bath, at approximately 741 square feet, this unit is priced at \$247,955.

**For more information, please call:
Harry Weiss 255-7951 x203
Karen Ramshaw 255-7951 x202
Public Interest Projects, Inc.**



204 | 2 Bedroom Flat



BILTMORE AVENUE

The Rice - White Condominium

1424 BILTMORE AVENUE, ASHLEVILLE, NORTH CAROLINA
 PRELIMINARY PLANNING/DESIGN FOR ILLUSTRATIVE PURPOSES
 FINAL FLOOR PLAN AND FLOOR AREA SUBJECT TO CHANGE


 Call North Carolina
 REALTORS TO
 704.251.2344
 704.251.2344
 ARCHITECT, INC.