



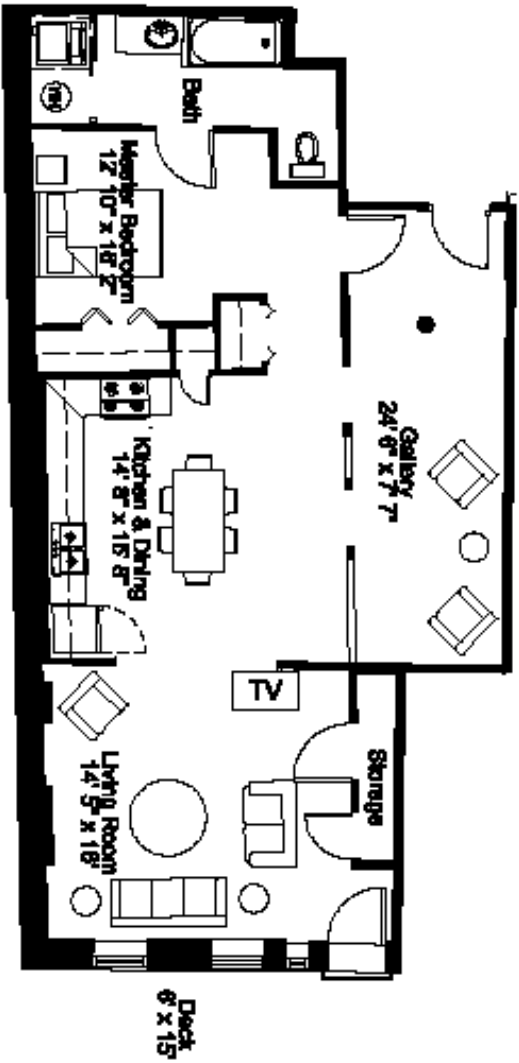
Photography by warnerphotography.com

**RICE-WHITE BUILDING  
21 BILTMORE AVENUE  
Unit 203  
ASHEVILLE, NC**

Eight residential units are available in the historic Rice-White building in the heart of downtown Asheville. Jeff Dalton, architect, Heartwood Renovations and Public Interest Projects worked together to create units which combine careful restoration with thoughtful integration of new features. Hardwood floors, high ceilings, secured entry, and high-speed wiring are just a few of the amenities that make these unique units great places to call home. Walk to the theatre, the movies, the music club, the grocery store and many fine shops and restaurants – they're all in your neighborhood!

Unit 203 has a quirky floor plan and needs creative owners. Unit opens into large room that would be great for a studio, study or reading nook – you even get your very own structural column! Large kitchen with plenty of space for a dining table opens into the living room. Bedroom is nicely sized and has great closet space. One-bedroom/one-bath, at approximately 1020 square feet, this unit is priced at \$347,655.

**For more information, please call:  
Harry Weiss 255-7951 x203  
Karen Ramshaw 255-7951 x202  
Public Interest Projects, Inc.**



**203** 1 Bedroom Flat

BILTMORE AVENUE



ONE NORTH JACKSON  
 SUITE 100  
 TOWSON, MD 21286  
 410.528.1234

**The Rice - White Condominium**

16-24 BILTMORE AVENUE, ARLINGTON, NORTH CAROLINA  
 PREPARED BY PLANNING DESIGN & CONSTRUCTION SERVICES  
 P.O. BOX 11000, RALEIGH, NC 27602