



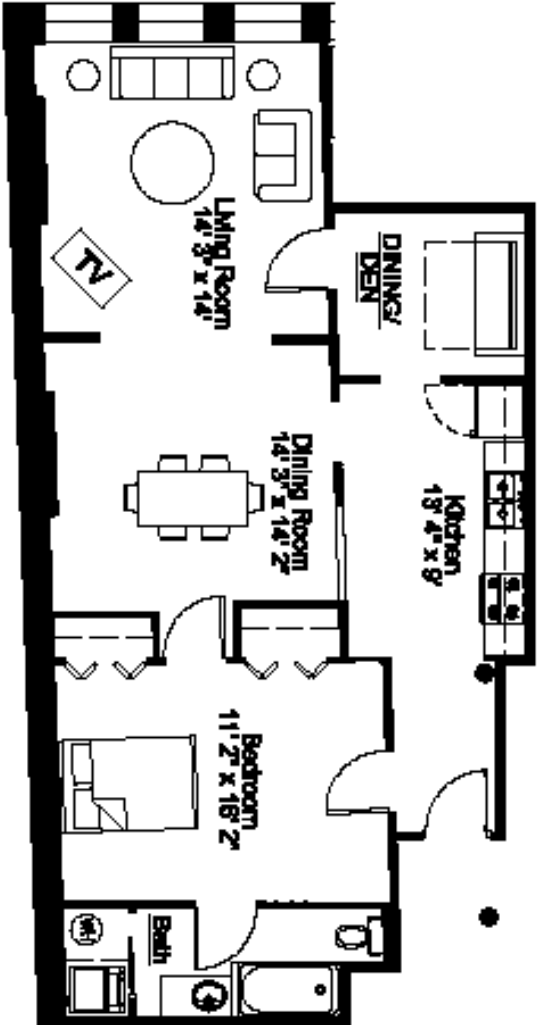
Photography by warnerphotography.com

**RICE-WHITE BUILDING
21 BILTMORE AVENUE
Unit 202
ASHEVILLE, NC**

Eight residential units are available in the historic Rice-White building in the heart of downtown Asheville. Jeff Dalton, architect, Heartwood Renovations and Public Interest Projects worked together to create units which combine careful restoration with thoughtful integration of new features. Hardwood floors, high ceilings, secured entry, and high-speed wiring are just a few of the amenities that make these unique units great places to call home. Walk to the theatre, the movies, the music club, the grocery store and many fine shops and restaurants – they're all in your neighborhood!

Unit 202 was born to entertain. Large dining room and living room open into each other. Unit also includes a kitchen alcove large enough for a table for four or a small office area. One-bedroom/one-bath, at approximately 964 square feet, this unit is priced at \$326,455.

**For more information, please call:
Harry Weiss 255-7951 x203
Karen Ramshaw 255-7951 x202
Public Interest Projects, Inc.**



2021 Bedroom Flat with a Den

BILTMORE AVENUE



The Rice - White Condominium

1434 BILTMORE AVENUE, ASHVILLE, NORTH CAROLINA

PREPARED BY PLANNINGDESIGNERS ARCHITECTURE
 PAUL FARR AND FLECKENBERG BARNETT BRADBE



ONE THIRTY SEVEN SQUARE
 METERS IN
 2000
 TEL: 252.712.2844
 F: 252.712.2828

ARCHITECT, INC.