



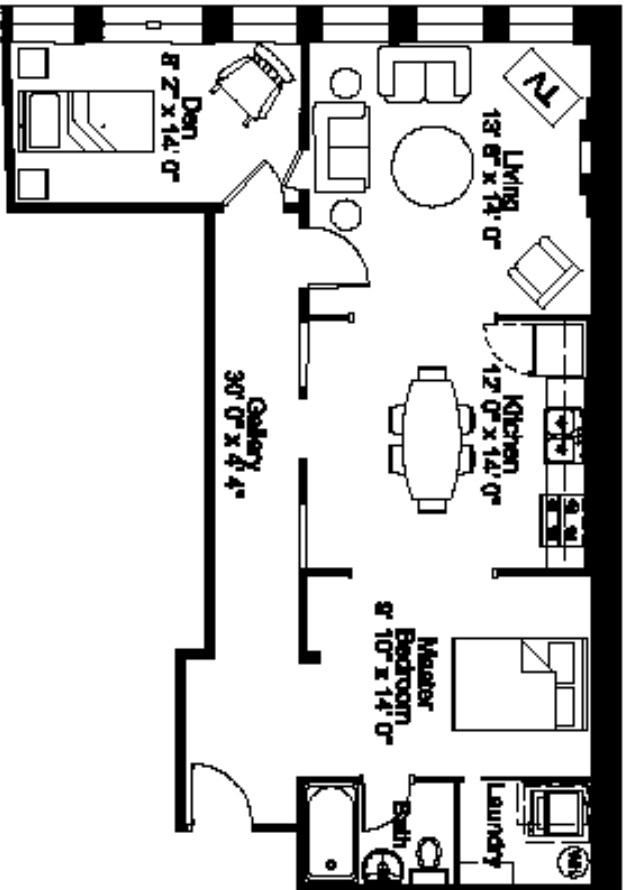
Photography by warnerphotography.com
Staging by Mobilia – Asheville, NC

**RICE-WHITE BUILDING
21 BILTMORE AVENUE
Unit 201
ASHEVILLE, NC**

Eight residential units are available in the historic Rice-White building in the heart of downtown Asheville. Jeff Dalton, architect, Heartwood Renovations and Public Interest Projects worked together to create units which combine careful restoration with thoughtful integration of new features. Hardwood floors, high ceilings, secured entry, and high-speed wiring are just a few of the amenities that make these unique units great places to call home. Walk to the theatre, the movies, the music club, the grocery store and many fine shops and restaurants – they're all in your neighborhood!

Unit 201 opens into a gallery hall that would be a lovely place to showcase your art collection. The living room features beautiful wood detailing and an original fireplace. The additional small light-filled room overlooking Biltmore would be a lovely study or studio space. One-bedroom/one-bath, at approximately 873 square feet, this unit is priced at \$289,755.

**For more information, please call:
Harry Weiss 255-7951 x203
Karen Ramshaw 255-7951 x202
Public Interest Projects, Inc.**



2011 Backroom Flat with a Den

BILTMORE AVENUE



Call North Carolina
 at 704.333.7777
 to
 1.800.333.7777
 or
 704.333.7777



1824 BILTMORE AVENUE, ASHVILLE, NORTH CAROLINA

The Rice - White Condominium

1824 BILTMORE AVENUE, ASHVILLE, NORTH CAROLINA

PRELIMINARY PLANS INTENDED FOR ILLUSTRATION PURPOSES.
 FINAL PLANS AND FLOOR FINISHES SUBJECT TO CHANGE.