



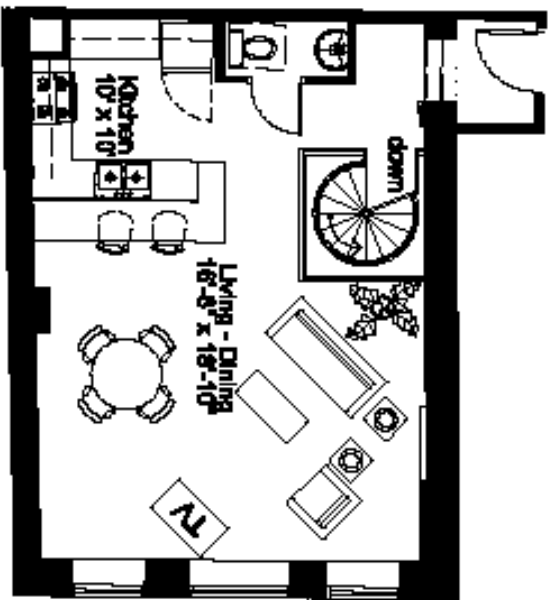
Photography by warnerphotography.com

**RICE-WHITE BUILDING  
21 BILTMORE AVENUE  
Live-Work Unit 102  
ASHEVILLE, NC**

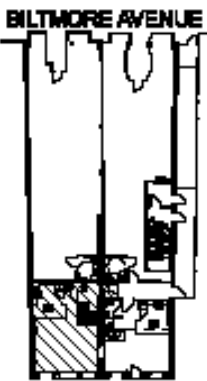
Two live-work townhouse units are available in the historic Rice-White building in the heart of downtown Asheville. Jeff Dalton, architect, Heartwood Renovations and Public Interest Projects worked together to create units which combine careful restoration with thoughtful integration of new features. Live-work units may be used for residential, office or commercial purposes and short-term rentals are permitted. Hardwood floors, high ceilings, secured entry, and high-speed wiring are just a few of the amenities that make these unique units great places to live and work. Walk to the theatre, the movies, the music club, the grocery store and many fine shops and restaurants – they're all in your neighborhood!

Unit 102 has a wonderful kitchen/living room with views to the West. Half-bath on main floor. Bedroom and bath area downstairs with French doors to small patio area. At approximately 1106 square feet, this unit is priced at \$358,855.

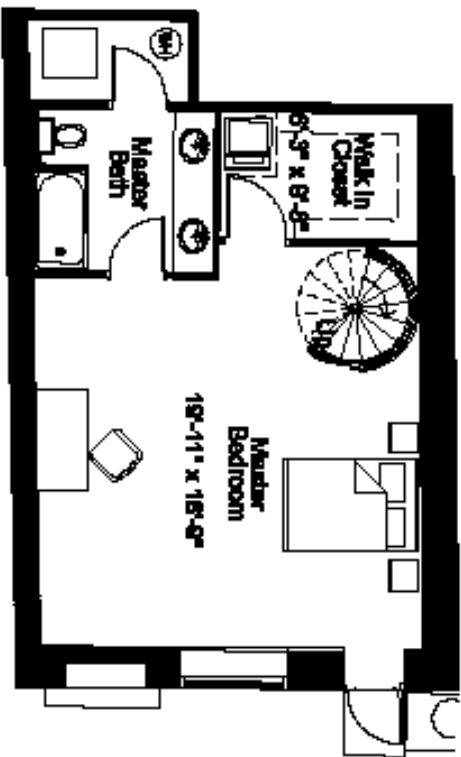
**For more information, please call:  
Harry Weiss 255-7951 x203  
Karen Ramshaw 255-7951 x202  
Public Interest Projects, Inc.**



1st FLOOR PLAN



1021 Bedroom Townhouse



LOWER LEVEL PLAN

**R** ONE NORTH PARK SQUARE  
 SUITE 200  
 1000 WEST 12TH  
 ASHEVILLE, NC 28702

**The Rice - White Condominium**  
 1424 BILTMORE AVENUE, ASHEVILLE, NORTH CAROLINA  
 PRELIMINARY PLANNING/DESIGN FOR ILLUSTRATIVE PURPOSES  
 FINAL PLANS AND FLOOR AREA SUBJECT TO CHANGE