



Photography by warnerphotography.com

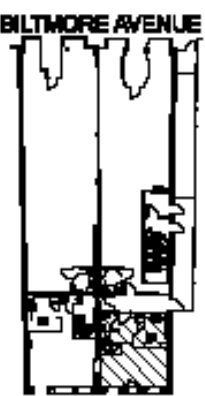
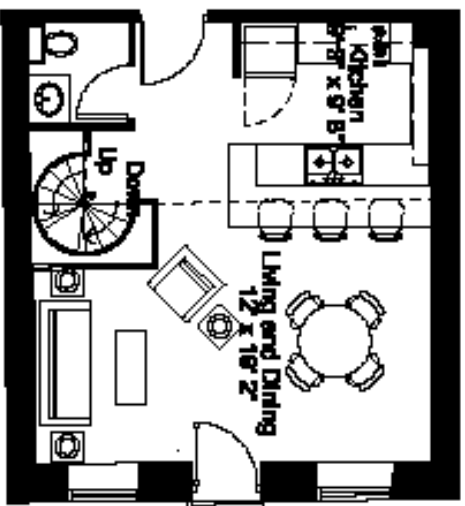
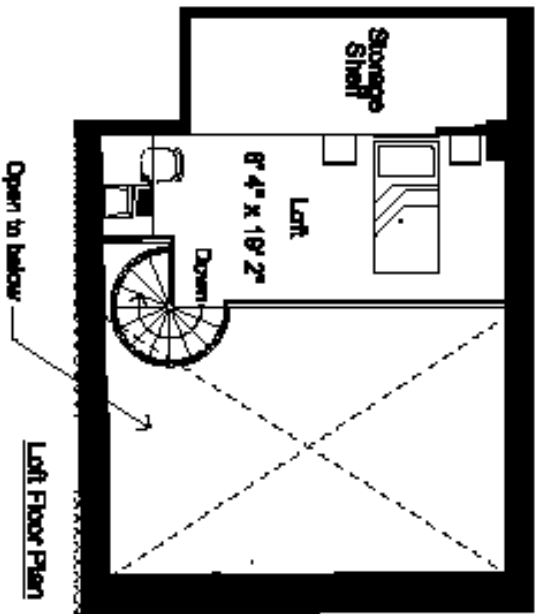
**RICE-WHITE BUILDING
21 BILTMORE AVENUE
Live-Work Unit 101
ASHEVILLE, NC**

Two live-work townhouse units are available in the historic Rice-White building in the heart of downtown Asheville. Jeff Dalton, architect, Heartwood Renovations and Public Interest Projects worked together to create units which combine careful restoration with thoughtful integration of new features. Live-work units may be used for residential, office or commercial purposes and short-term rentals are permitted. Hardwood floors, high ceilings, secured entry, and high-speed wiring are just a few of the amenities that make these unique units great places to live and work. Walk to the theatre, the movies, the music club, the grocery store and many fine shops and restaurants – they're all in your neighborhood!

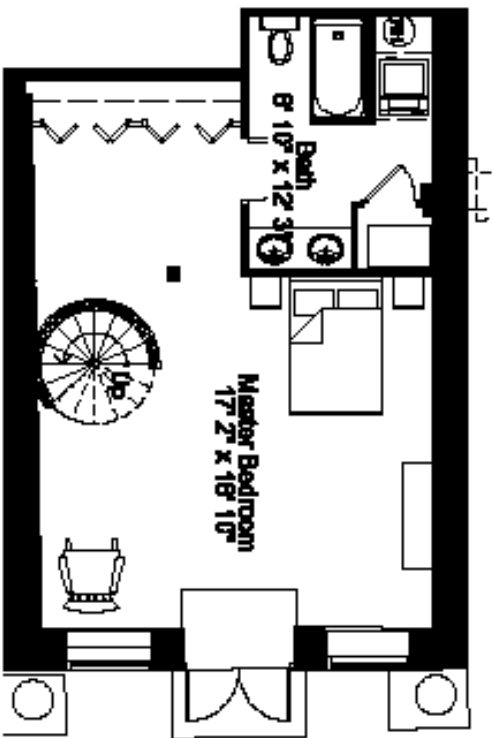
Unit 101 has a wonderful kitchen/living room with views to the West. Half-bath on main floor. Bedroom and bath area downstairs with French doors to small patio area. Storage loft over living area is a wonderful plus. At approximately 1232 square feet, this unit is priced at \$373,455.

For more information, please call:

**Harry Weiss 255-7951 x203
Karen Ramshaw 255-7951 x202
Public Interest Projects, Inc.**



1011 Bedroom Townhouse with a Loft



R CONCEPT ARCHITECTURE
 1001 BILTMORE AVENUE, SUITE 200
 ASHVILLE, NORTH CAROLINA 28701
 TEL: 828.251.2244
 FAX: 828.251.2245

The Rice - White Condominium
 18-24 BILTMORE AVENUE, ASHVILLE, NORTH CAROLINA
 PRELIMINARY PLANNING/DESIGN FOR ILLUSTRATIVE PURPOSES
 FINAL PLANS AND FLOOR LOADS SUBJECT TO CHANGE